

INSTALLATION GUIDE

Thank you for choosing our flooring. When properly installed and cared for, your new flooring will be easy to maintain and will keep its great look for years. Please read all the instructions and follow all recommendations before you begin the installation. Improper installation will void the warranty.

Check-off each Item	Item	Standard	Why it is critical
	Subfloor flatness	Subfloor must be flat within 5 mm over 3 m.	A non-flat subfloor can cause gapping, buckling, and damage to the locking system.
	Subfloor moisture	ASTM F2170 RH 80% ASTM F1869 3.63 kg/92 m ² CM 2.5%	Subfloor moisture can cause site-related issues which might lead to an installation failure, alkali salt buildup damage to joints, and a potential mold source. 0.15 mm poly sheeting is required on all substrates.
	Subfloor deflection	Subfloor must be structurally sound with no up-and-down movement.	Subfloor deflection will cause gapping and joint damage to the locking mechanism.
	Approved substrate	No soft substrates.	Additional soft underlayment is not to be used and will void the warranty. Cushioned vinyl, floating floors, and carpets are not suitable substrates. Vinyl flooring should never be installed over wood that is installed over concrete doing so will void the warranty.
	Inspect planks	Inspect planks to be installed closely for visible damage.	Prior to installation, inspect the material in daylight for visible faults/damage, including defects or discrepancies in color or shine; check the edges of the flooring for straightness and any damage. No claims on surface defects will be accepted after installation.
	Maintain appropriate expansion space	Floating floors must be free to move.	Improper expansion can cause cupping, gapping, and damage to the locking system. Don't hard butt flooring into door jams, walls and kitchens. Do not silicone perimeter of open plan rooms (wet areas only 15m² or less, please read instructions)

I. GENERAL PREPARATIONS

TOOLS REQUIRED: Spacers, wedges, rubber mallet, ruler, pencil, tape measure, utility knife, tapping block, 0.15 mm moisture barrier, square, transition moldings, jamb saw, chalk line, eye protection, level, knee pads (optional), broom or vacuum.

- Prior to installation, inspect the material in daylight for visible faults/damage, including defects or discrepancies in color or shine; check the edges of the flooring for straightness and any damage. No claims on surface defects will be accepted after installation.
- It is preferable to lay boards perpendicular to the window, following the direction of the main source of light. For the best result, make sure to always work from 3 to 4 cartons at a time, mixing the planks during the installation.
- Check if subfloor/site conditions comply with the specifications described in these instructions. If the subfloor is not within specifications, **DO NOT INSTALL**, and contact your supplier.
- Flooring products can be damaged by rough handling before installation. Exercise care when handling and transporting these products. Store, transport and handle the cartons in a manner to prevent any damage. Store cartons flat, never on edge.
- Flooring products can be heavy and bulky. Always use proper lifting techniques when handling these products. Whenever possible, make use of material-handling equipment such as dollies or material carts. Never lift more than you can safely handle; get assistance.
- Calculate the room surface prior to installation and plan an extra 5-10% of flooring for cutting allowance.
- The environment where the flooring is to be installed is critically important with regard to successful installation and continued performance of the flooring products. The flooring is intended to be installed in interior locations only. These interior locations must meet climatic and structural requirements as well.
- Keep the boards at room temperature for at least 24 hours in an unopened package before you start the installation. The room temperature must be maintained consistently between 20-25° C before and during the installation.
- The flooring should only be installed in temperature ranges between 20-25° C, it is necessary to maintain a constant temperature before and during the installation. Portable heaters are not recommended as they may not heat the room and subfloor sufficiently. Kerosene heaters should never be used.
- **After installation, make sure that the flooring is not exposed to temperatures less than 10° C or greater than 50° C.**
- For floor surfaces exceeding 250 m² and/or lengths exceeding 15 m, use expansion moldings.

II. SUBFLOOR INFORMATION

- The flooring can be installed over most existing hard surface floor coverings, provided that the existing floor surface is structurally sound, clean, dry, and smooth. Subfloor variations should not exceed 5 mm over 3 m.
- The substrate should not slope more than 25 mm per 2 m in any direction.
- Depressions, deep grooves, expansion joints, and other subfloor imperfections must be filled with patching & leveling compound.
- Substrates must be free from excessive moisture or alkali. Remove dirt, paint, varnish, wax, oils, solvents, and any foreign matter and contaminants.
- Do not use products containing petroleum, solvents, or citrus oils to prepare substrates as they can cause staining and expansion of the new flooring.

- **Although this floor is waterproof, it is not to be used as a moisture barrier.**
- This product is also not to be installed in areas that have a risk of flooding such as saunas or outdoor areas, seasonal porches, camping trailers, boats, RVs, lanais, rooms that are prone to flooding, or rooms or homes that are not temperature-controlled. 3

- **Acceptable job site conditions, including subfloor moisture conditions, must be maintained throughout the lifetime of the flooring.**

WOOD SUBFLOORS

- If this flooring is intended to be installed over an existing wood floor, it is recommended to repair any loose boards or squeaks before you begin the installation.
- Wood subfloors must have no more than 12% MC (moisture content).
- Basements and crawl spaces must be dry. Use of a 0.15 mm poly-film is required to cover 100% of the crawl space earth.
- We recommend laying the flooring crossways to the existing floorboards.
- All other subfloors - plywood, OSB, particleboard, chipboard, wafer board, etc. must be structurally sound and must be installed following their manufacturer's recommendations.
- DO NOT install over sleeper construction subfloors or wood subfloors applied directly over concrete.
- A minimum of 0.15 mm poly-film is required as a moisture barrier between the subfloor and the flooring.

CONCRETE SUBFLOORS

- Existing concrete subfloors must be fully cured, at least 60 days old, smooth, permanently dry, clean, and free of all foreign material such as dust, wax, solvents, paint, grease, oils, and old adhesive residue.
- The subfloor must be dry. With a pH limit of 9 and comply with moisture content requirements and tested as per the below methods:
 - Concrete moisture vapor emissions must not exceed 3.63 kg MVER (moisture vapor emission rate) per 93 m² per 24 hours. This can be measured with the calcium chloride test (ASTM F1869).
 - 90% RH (ASTM F2170).
 - Max. 2.5% moisture content (CM method / ASTM F2659).
- **A minimum of 0.15 mm poly-film is required as a moisture barrier between the concrete subfloor and the flooring.**

NOTE: THE RESPONSIBILITY OF DETERMINING IF THE EXISTING FLOORING IS SUITABLE TO BE INSTALLED OVER RESTS SOLELY WITH THE INSTALLER/FLOORING CONTRACTOR ON SITE. IF THERE IS ANY DOUBT AS TO SUITABILITY, THE EXISTING FLOORING SHOULD BE REMOVED, OR AN ACCEPTABLE UNDERLAYMENT INSTALLED OVER IT. INSTALLATIONS OVER EXISTING RESILIENT FLOORING MAY BE MORE SUSCEPTIBLE TO INDENTATION.

DO NOT INSTALL OVER

- Any type of carpet.
- Existing cushion-backed vinyl flooring.
- Floating floor of any type, loose lay, and perimeter fastened sheet vinyl.
- Hardwood flooring / wood subfloors that lay directly on concrete or over dimensional lumber or plywood used over concrete.

IMPORTANT NOTICE

In-floor Radiant Heat: Flooring can be installed over 12 mm embedded radiant heat using the floating method. Maximum operating temperature should never exceed 30° C. The use of an in-floor temperature sensor is recommended to avoid overheating.

- Turn the heat off for 24 hours before, during, and 24 hours after installation when installing over radiant heated subfloors.
- Before installing over newly constructed radiant heat systems, operate the system at maximum capacity to force any residual moisture from the cementitious topping of the radiant heat system.
- Make sure that the temperature in the room is maintained consistently between 20-25° C before and during the installation.
- Once the installation is completed, the heating system should be turned on at the ambient temperature and gradually increased in 5° C increments every 12 hours until reaching normal operating conditions.
- Refer to the radiant heat system's manufacturer recommendations for additional guidance.

Warning: Electric heating mats that are not embedded into the subfloor are not recommended for use underneath the floors. Using electric heating mats that are not embedded and applied directly underneath the floors could void the warranty for your floor in case of failure. It is best to install the flooring over embedded radiant floor heating systems and adhere to the guidelines listed above.

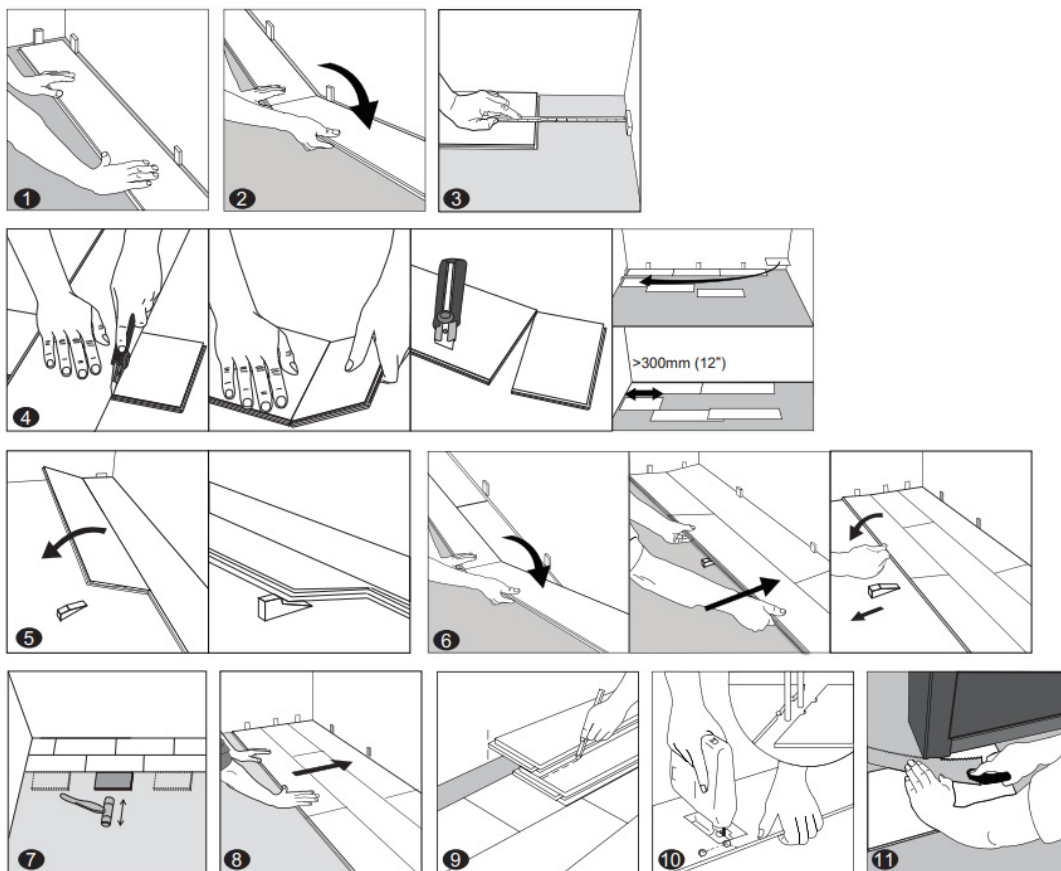
Tip: The best idea to maximize the results of your heating system is to have "ON" times with a comfortable temperature and "OFF" times with setback temperatures which are normally 4° C lower than your comfort temperature. The setback temperatures are particularly important as these won't let the temperature of your room drop too much, meaning it is much quicker to heat your room back to comfort levels when it's needed.

III. INSTALLATION

- Remove trim molding, wall base, appliances, and furniture from the room. For the best results, door jambs must be undercut to allow the flooring to move freely without being pinched. After preparation work, sweep and vacuum the entire work area to remove all dust and debris.
- With a floating floor you must always ensure you leave a 10 mm gap between walls and fixtures such as pillars, stairs, etc. These gaps will be covered with trim moldings after the floor is installed.
- Whenever possible, plan the layout so that the joints in the planks do not fall on top of joints or seams in the existing substrate. The end joints of the planks should be staggered a minimum of 20 cm apart. Do not install over the expansion joints. Avoid installing pieces shorter than 30 cm at the beginning or end of rows.
- Do not install your kitchen cabinets directly over your floor. Built-in cabinets, kitchen cabinets, islands, and similar heavy items **must be installed first**. Only then can the flooring be installed,

leaving an appropriate expansion gap around it. This gap will be covered with trim moldings after the floor is installed. **The quality of the floor can only be guaranteed if it is allowed to move freely. It must not be nailed, adhered, or fastened to the subfloor in any way.**

- Decide the installation direction. It is recommended to install the boards perpendicular to the window following the direction of the main source of light. 5
- **Do not silicone the perimeter of open plan areas**
- **Do not hard butt flooring into door jambs, walls or kitchens as this may result in the floor failing**
- Measure the area to be installed: The board width of the last row shall not be less than 50 mm. If so, adjust the width of the first row to be installed. In narrow hallways, it is recommended to install the floor parallel to the length of the hall.
- **UNDERLAY:** If the floor DOES NOT HAVE a pre-attached underlayment, an additional underlayment is recommended in order to improve acoustic performance and absorb some irregularities on the substrate. Best results can be expected with an underlayment of 1 mm maximum thickness with a high density ($>135 \text{ kg/m}^3$), high compressive strength ($\geq 200 \text{ kPa}$ according to EN 16354, ASTM D3575-20, Suffix D), and $<10\%$ thickness change (according to ASTM D3575-20, Suffix B) that supports the click system during daily use. Thicker underlayments, underlayments with a low density and inadequate compressive strength could damage the locking mechanism and will void the warranty. If the floor HAS a pre-attached underlayment, the use of an additional underlayment could damage the locking mechanism and will VOID warranty.



1. **First row, first plank:** After thoroughly cleaning the subfloor, you should begin laying from left to right. Position the first plank so that the grooved edge is facing you. Place the floorboard 10 mm from the left wall. Use spacers between the wall and the floorboard.
2. **First row, second plank:** Insert the end tongue on the short side of the second plank into the end groove of the first one and rotate downward to assemble. Make sure both planks are perfectly aligned. **6 IMPORTANT:** If you notice both planks aren't at the same height or are not well-locked together, please follow the disassembling instructions at the bottom of the page, disassemble, and check if any debris stuck inside the lock is obstructing. Failure to properly line up the end joint and attempting to force it in while out of alignment could result in permanent damage to the end joint.
3. **First row, last plank:** At the end of the first row, leave an expansion gap of 10 mm to the wall and measure the length of the last plank to fit.
4. **To cut the plank:** Use a simple utility knife and ruler, and with the top side facing up, score heavily and several times on the same axis. The knife will not go through the surface but make a deep cut. You can then snap one half of the plank using your other hand to hold down the second placing it very close to the cut. The plank will split naturally.
5. **Second row, first plank:** Start the second row with the leftover cut part of the last plank of the previous row. This small plank should measure at least 30 cm. Otherwise, cut a new plank in half and use it to begin the second row. The end joints of each adjoining row should not be closer than 20 cm to each other. Whenever practical, use the piece cut from the preceding row to start the next row. Click the long side of the plank into the previous row and place an installation wedge under the board.
6. **Second row, second plank:** Place the short end of the plank at an angle against the short side of the previously installed floorboard and fold down. Slide down the long side of the board into the locking groove of the adjacent floorboard in the previous row. When the whole row is complete, remove the wedge and fold the row down.
7. **After finishing the installation of every row:** Use a tapping block and a small hammer or rubber mallet to gently tap the planks into the click of the previous row to make sure they are tightly clicked together and make sure there is no gap between the long side of the planks installed. Any gapping can compromise the whole installation.
8. **Tip:** After the first 2-3 rows of planks are installed, they should be checked with a string line to ensure that rows are still running straight. If they are not, it could be that the starting wall has some irregularities that caused bowing in the installation. If so, the starting row of planks may have to be scribed and re-trimmed to account for any unevenness in the wall. This can be done without having to disassemble the beginning rows.
9. **To lay the last row:** Position a loose board exactly on top of the last row laid. Place another board on top, with the tongue side touching the wall. Draw a line along the edge of this board, to mark the first board. Cut along the edge of this board to mark the first board. Cut along this line to obtain the required width. Insert this cut board against the wall. The last row should be at least 50 mm wide. The spacers can then be removed.
10. **Holes for pipes:** Measure the diameter of the pipe and drill a hole that is 20 mm larger. Saw off a piece as shown in the figure and lay the board in place on the floor. Then lay the sawed-off piece in place.
11. **Door molding and skirting:** Lay a board (with the decorative side down) next to the door molding and saw as shown in the figure. Then slide the floorboard under the molding.

INSTALLATION IN WET AREAS (maximum 15m2)

IMPORTANT: This product is not warranted for installation in wet areas with running water and areas with built-in drains, e.g., pools and shower areas.

- Use a T-molding to separate the wet area from the rest of the installation.
- Fill the expansion spaces with a compressible PE foam backer rod and cover them with a flexible 100% silicone sealant around the entire perimeter of the installation before installing moldings. Branded and generic silicone tubes are available at any local home center or hardware store.

IMPORTANT: Do not use acrylic sealant.

- Apply silicone sealant to connections to doorframes or any other fixed objects.

IV. FINISHING THE INSTALLATION

- Protect all exposed edges of the flooring by installing wall molding and/or transition strips. Allowing slight clearance between the molding and the planks. Make sure that no plank will be secured in any way to the subfloor.
- At doorways and at other areas where the flooring planks may meet other flooring surfaces, the use of a transition molding is required to cover the exposed edge but do not pinch the planks. Leave a 10 mm gap between the planks and the adjoining surface.

V. MAINTENANCE

- Use appropriate window coverings, such as drapes, window treatments, or UV-tinting on windows, to protect the product from direct sunlight as long-term exposure to direct sunlight can potentially lead to discoloration.
- Sweep or vacuum daily using soft bristle attachments. Do not use a vacuum equipped with a beater bar.
- Do not buff or sand the surface.
- Clean up spills and excessive liquids immediately.
- Damp mop as needed and use neutral cleaners recommended for vinyl flooring.
- The use of residential steam mops and spray mops on this product is allowed. Use at the lowest power with a suitable soft pad, and do not hold a steam mop on one spot for an extended period of time (longer than 30 seconds). Refer to the mop's manufacturer instructions for proper usage.
- Use proper floor protection devices such as felt protectors under furniture. Equip wheeled-type office chairs and other rolling furniture with wide-surface, casters at least 5 cm in diameter.
- Place a walk-off mat at outside entrances to reduce the amount of dirt brought into your home. Do not use mats with latex or rubber backing since these backings can cause permanent discoloration.
- Do not use abrasive cleaners, bleach, or wax to maintain the floor.
- For stubborn spills use low odor mineral spirits or denatured alcohol applied to a clean cloth. Never pour chemicals directly on the floor.
- Do not drag or slide heavy objects across the floor.
- The flooring can be used in homes where wheelchairs are needed, but only certain thickness products can be installed for that purpose - not including pre-attached backing, at least 5 mm thick product. The flooring must not be applied to ramps. Motorized wheelchairs are NOT to be used.

VI. DISASSEMBLING

To disassemble, simply lift the planks one by one following the opposite sequence as the installation.