



Class 1

Building Product Information Requirement

Product Name:

Wabisabi Nero 50 X 150

Product Identifier:

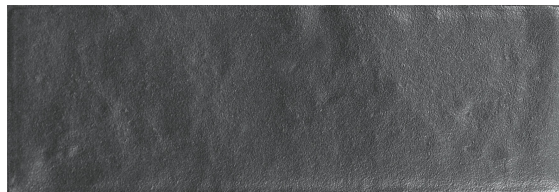
WABISABINE

Product Description & Specifications:

Wabi-sabi is a Japanese term for finding the beauty in imperfect or incomplete things. An apt term that describes the growing appreciation for the handmade tile aesthetic. The WABISABI tile collection has been inspired by traditional Zellige and captures the variations of size, thickness and shading intrinsic to handmade tiles. Available in 8 colours, WABISABI 50x150mm has all the appearance of handmade tiles with all the benefits of a matt factory produced porcelain that can be used on floors and walls and even inside pools.

Finish:	MATT
Material:	PORECELAIN
Origin:	ITALY
Size:	50 x 150
Thickness:	8
PEI:	3
Variation:	2
Weight:	20 kg per m ²
Rectified:	No
Sealing Required:	No
Colour:	Charcoal
m ² Per Box:	0.585
Tiles Per Pack:	78

Image:



Manufacturer:

Tile Depot Approved supplier. All our manufacturers produce material to comply with the technical requirements and tolerances prescribed by ISO13006.

Legal and Trading name of the importer:

Tile Depot LP
NZBN: 9429049866773
Address: 83 Harris Rd, East Tamaki, Auckland, New Zealand
Website: www.tiledepot.co.nz
Email: info@tiledepot.co.nz
Phone: 0800 845 3337



Relevant Building Code Clauses:

D1 – Access Routes Refer Section 2.0

Requires access routes to have an adequate slip resistance surface. For housing this requirement applies only to the access route on the approach to the main entrance and not inside that entrance and not on the approach to other entrances. The internal access routes of housing, including kitchens and bathrooms shall be assumed to be dry in normal use. When specifying suitability of a selected tile refer to D1 2.0 in conjunction with the slip rating of the material provided.

E3 – Internal Moisture

Clause 3.1.1 references product porosity. Ceramics are a commonly accepted industry solution and porcelain tiles have a very low water absorption level (less than 0.5%). Higher porosity ceramic and natural stone products can be presented as an alternative solution. Ceramic wall tiles have an impervious glaze and a protective layer called an engobe. Natural stone can be sealed with a penetrating sealer. Grouts can be sealed or the use of epoxy grouts will minimise water penetration to the substrate. If in doubt check with the specifier prior to installation.

C3 – Protection from Fire

The Building code relating to fire rating regulations and standards requires specifiers to provide documentation such as fire certificates for materials used in construction. Ceramics are in itself fire-resistant material, most being manufacturer in excess of 1200 degree Celsius. Testing and providing such certification is therefore not relevant to the ceramics industry.

Ceramics are non-combustible and they do not release fumes or toxic gases in the event of a fire. Ceramics contain no sealants, waxes or other chemicals that could release VOC's into the environment. Ceramics do not pose a risk of spreading or intensifying a fire.



Statement on how this product is expected to contribute to compliance:

D1 – Access Routes – subject to intended use, location and slip resistance properties of selected tile.
C3 – Protection from Fire - Ceramics do not pose a risk of spreading or intensifying a fire.

Limitations on the use of this building product:

Porcelain and ceramic tiles will not perform without a suitable substrate. It is the responsibility of the specification designer and / or installer to ensure an adequate substrate prior to installation.

Refer to the individual product specifications which outline characteristics including material, surface finish, size, PEI, weight and slip rating where applicable.

Installation Requirements:

Tiles must be installed by a competent trades person. Relevant resources include:

- MBIE Guide to tolerances
- Branz Good Practice guide – Tiling
- NCTC – Tile & Tiling Guide
- BCITO training and accreditation
- Installation systems from reliable adhesive & waterproofing manufacturers

Tiles are one of the most hygienic and easily maintained wall and floor surfaces available. A simple routine clean is required regularly with suitable tile specific cleaning agents.

This product is not subject to a warning or ban under section 26 of the Building Act 2004

Version 1

Date: August 23 2025