



FIORANESE
CERAMICA

**Cementine
black & white**

CEMENTINE
_black&white





_b&w

_b&w mix
_b&w 3
20x20 - 8"x8"
Naturale/Rettificato - Matte/Rectified

_concrete light grey
60,4x60,4 - 24"x24"
Naturale/Rettificato - Matte/Rectified



_b&w 2

20x20 - 8"x8"
Naturale/Rettificato - *Matte/Rectified*

_urban_stone grey
60,4x120,8 - 24"x48"
Naturale/Rettificato - *Matte/Rectified*



_b&w 2

20x20 - 8"x8"
Naturale/Rettificato - *Matte/Rectified*

_urban_stone grey
60,4x120,8 - 24"x48"
Naturale/Rettificato - *Matte/Rectified*



_b&w 5

20x20 - 8"x8"
Naturale/Rettificato - *Matte/Rectified*

_blend concrete grigio
20x20 - 8"x8"
Naturale/Rettificato - *Matte/Rectified*





_b&w mix

20x20 - 8"x8"
Naturale/Rettificato - *Matte/Rectified*



_b&w

*_b&w mix
_b&w 4
20x20 - 8"x8"
Naturale/Rettificato - Matte/Rectified*

*_blend concrete gomma
60x60 - 24"x24"
Naturale/Rettificato - Matte/Rectified*



_b&w

_b&w mix
_b&w 4
20x20 - 8"x8"
Naturale/Rettificato - *Matte/Rectified*

_blend concrete gomma
60x60 - 24"x24"
Naturale/Rettificato - *Matte/Rectified*





_b&w 1

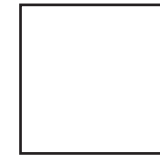
20x20 - 8"x8"
Naturale/Rettificato - *Matte/Rectified*



CEMENTINE

_black&white

_gres porcellanato
body-color



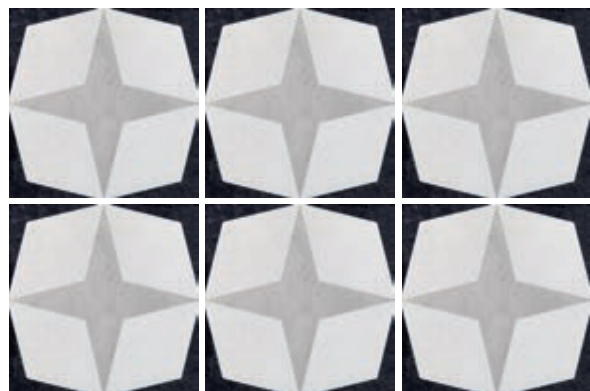
20x20 - 8"x8"
Naturale/Rettificato - *Matte/Rectified*

Designed by *Silvia Stanzani*



_mix

b&w_1



b&w_2



b&w_3



b&w_4





b&w_5

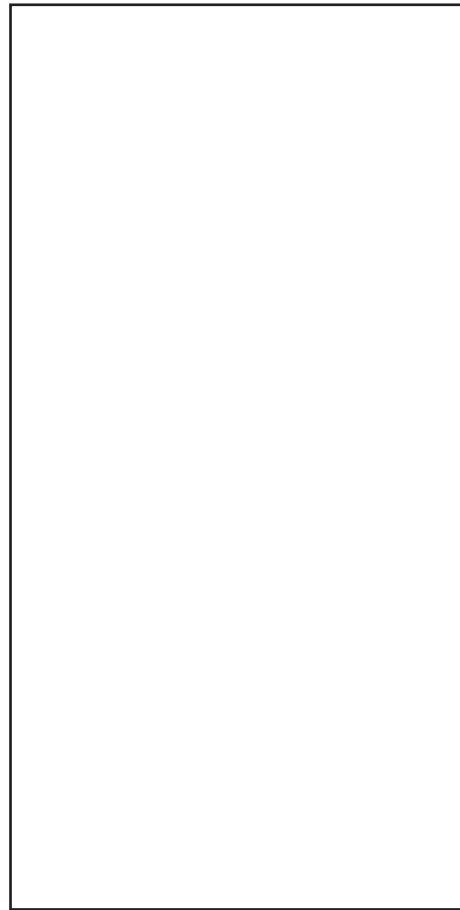


_black&white

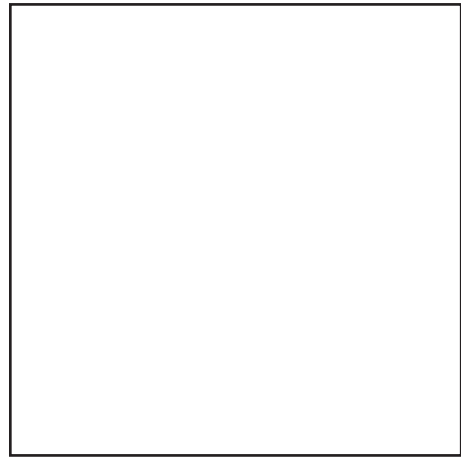
_confezionamento
_packaging

Formato Size Format Format Формат	Codice Code Artikelnummer Code Код	Articolo Item Artikel Article Товар	Scatole			Pallet			SPESSORE Thickness Stärke Epaisseur Толщина
			PZ/SC Pcs/Box Stck/Ktn Pes/Boîte Шт/кор	MQ/SC Sqm/Box Qm/Ktn M²/Boîte Кв.м/кор	KG/SC Kg/Box Kg/Ktn Kg/Boîte Кг/Кор	COLLI Boxes Kartons Boîtes Коробки	MQ Sqm Qm M² Кв.М	KG Kg Kg Kg Кг	
NATURALE/RETTIFICATO - MATTE/RECTIFIED - MATT/REKTIFIZIERT - MATT/RECTIFIEE - НАТУРАЛЬНЫЙ/РЕКТИФИЦИРОВАННЫЙ									
 20x20 - 8"x8"	CBW20C1 CBW20C2 CBW20C3 CBW20C4 CBW20C5	Black&White_1 Black&White_2 Black&White_3 Black&White_4 Black&White_5	27	1,08	22	68	73,44	1506	10 mm
 20x20 - 8"x8"* 12 soggetti assortiti	CBW20R	Mix	27	1,08	22	68	73,44	1506	10 mm

* Non è garantito un numero minimo di soggetti differenti all'interno di una scatola. - Minimum number of assorted patterns in each box not guaranteed.
Eine Mindestanzahl von unterschiedlichen Subjekten in einer Schachtel kann nicht garantiert werden. - Une quantité minimum de sujets différents dans une même boîte ne peut être garantie. - В упаковке не гарантировано минимальное количество различных сюжетов.



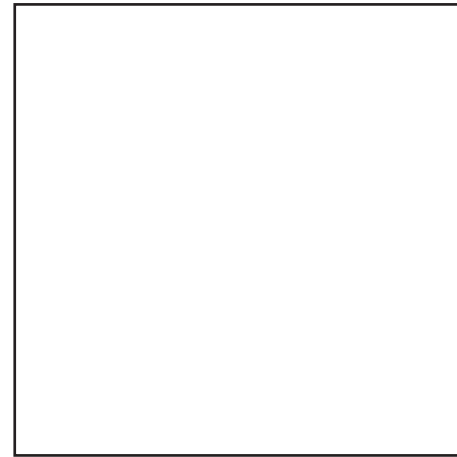
60,4x120,8 - 24"x48"
Naturale/Rettificato - *Matte/Rectified*



60,4x60,4 - 24"x24"
Naturale/Rettificato - *Matte/Rectified*



30,2x60,4 - 12"x24"
Naturale/Rettificato - *Matte/Rectified*



60x60 - 24"x24"
Naturale/Rettificato - *Matte/Rectified*

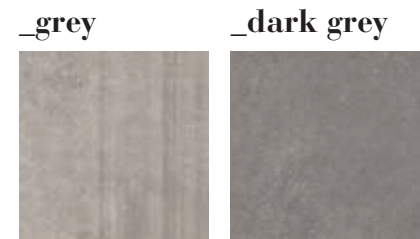


30x60 - 12"x24"
Naturale/Rettificato - *Matte/Rectified*



20x20 - 8"x8"
Naturale/Rettificato - *Matte/Rectified*

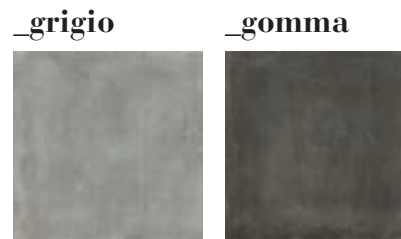
_abbinamenti consigliati
_recommended matchings



_urban_stone



_concrete



_blend concrete

CEMENTINE

_black&white

_informazioni tecniche

_technical informations

**V1**

Soggetto unico

**V4**

Mix

R9**BCRA**Dry: > 0,40
Wet: > 0,40**PEI 4****DCOF**

Wet: 0.67

EN 14411:2012 Annex C Group BIa GL

**Pavimento**
Floor coverings - Bodenbeläge
Sol - Напольная**Rivestimento**
Wall coverings - Wandbeläge
Faïence - Настенная**Residenziale**
Residential areas - Wohngebiete
Zones résidentielles - Жилые помещения**Esterno**
Outdoor areas - Außenbereiche
Espaces extérieurs - Внешние помещения**Traffico leggero**
Light traffic areas - Geringe Begehungsfrequenz
Zones à trafic léger - Область с низким трафиком**Traffico pesante**
Heavy traffic areas - Starke Begehungsfrequenz
Zones à trafic intense - Область с высоким трафиком**Zone limitrofe a piscina**
Swimming pool areas - Schwimmbadbereich
Abords de piscines - Бассейны**Rivestimenti esterni / Pareti ventilate**
External cladding / Ventilated facade - Außenverkleidung / Hinterlüftete Fassaden
Murs extérieurs / Façades ventilées - Внешняя оболочка / Вентилируемые Стены**FIO.eco**
RECYCLING**Elevato contenuto di materiale riciclato**
High content of recycled material
Hoher Anteil an Recycelten Rohstoffen
Haute teneur en matériaux recyclés
Высокое содержание переработанных материалов**Materiale ottenuto anche con il recupero delle acque e dei materiali di scarto del ciclo produttivo.**
Product obtained also through the recovery of water and waste from the production cycle.
Produkttypologien die unter anderem durch die Wiedergewinnung von Abwässern und Ausschussmaterial des Produktionszyklus erhalten werden.
Produit fabriqué aussi avec les eaux recyclées et les rebuts du cycle de production.
Изделие полученных при оборотном использовании воды и отбракованных в процессе производственного цикла материалов.41042 Fiorano Modenese (MO) Italy
Via Cameazzo, 25 - Tel. (+39) 0536.99.35.11
Fax Italia 0536.99.35.56 - Fax Export (+39) 0536.83.26.11
Ragione Sociale: COEM S.p.A.
Sede Legale: 41042 Fiorano Modenese (MO) Italy - Via Cameazzo, 25.

FIORANESE
CERAMICA

www.fioranese.it - info@fioranese.it