

# SPECIFICATION SHEET

## Arc 900mm 2 Door, 2 Drawer Floor Vanity



### Features

- Floorstanding
- Soft Close Doors & Drawers
- Negative detail finger pull
- Cabinet:  
Laminate Woodgrain & Solid Colours on MR Board
- Slab Top Options:  
20mm Quartz Top or StoneCast Top
- Dimensions: H820 x W900 x D465

*Note: Vessel basins are purchased separately.  
Visit [www.newtech.co.nz](http://www.newtech.co.nz) for full range of vessel basin options.*

### Colour Options with Code



Alaskan  
**97194ALS**



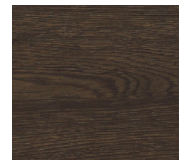
Planked Urban Oak  
**97194PUO**



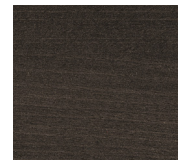
Southern Oak  
**97194STH**



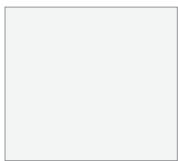
Charred Oak  
**97194CHO**



Borders Oak  
**97194BOK**



Burnished Wood  
**97194BUW**



Gloss White  
**97194GW**



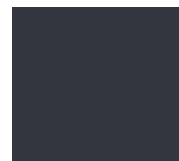
Dawn Grey  
**97194DGY**



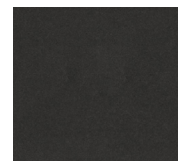
Spinifex  
**97194SPX**



Green Slate  
**97194GRS**



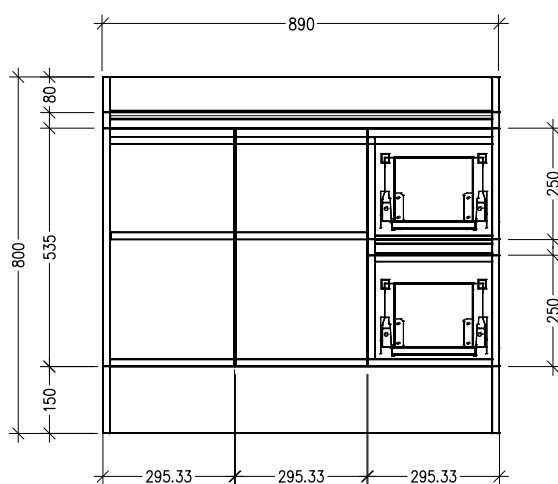
Char Blue  
**97194CBL**



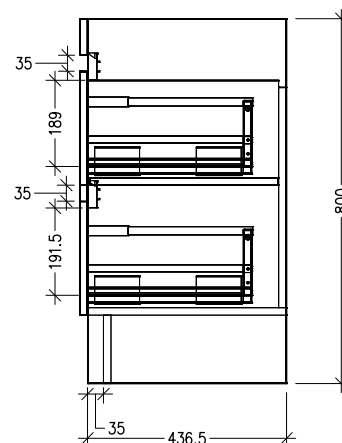
Bullet  
**97194BUL**

### Technical Details

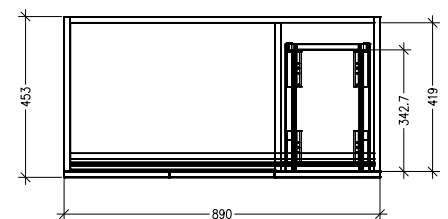
*Note: All measurements shown are in millimetres. Sizes are nominal.*



FRONT VIEW



SIDE VIEW



TOP VIEW